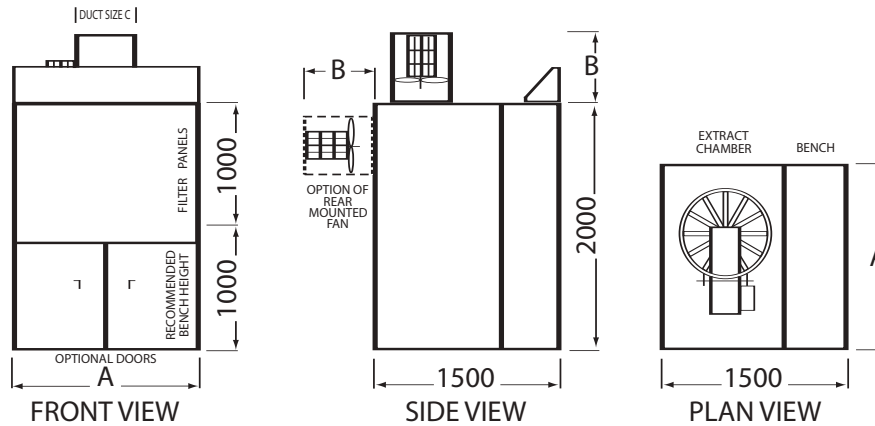


Bench Type Booths and Low Level Extraction Boxes Bench Type Booths Optional Bench Depths/Heights Available



Bench Type Drybooth with Front Canopy

Model	Working	Fan	Duct		Motor	Output
	Width 'A'	Length "B"	Size 'C'	Fan Qty	Kw each	m3/Hour
1T1000BT	1000	520	450	1	0.55	4200
1T1500BT	1500	520	450	1	0.55	4200
1T2000BT	2000	520	600	1	0.75	5900
1T2500BT	2500	520	600	1	1.1	8400
1T3000BT	3000	520	600	1	1.1	8400
1T3500BT	3500	520	600	1	1.5	13500
1T4000BT	4000	520	600	1	1.5	13500
1T4500BT	4500	520	600	1	1.5	13500
1T5000BT	5000	520	600	2	1.1	16800
1T5500BT	5500	520	600	2	1.1	16800
1T6000BT	6000	520	600	2	1.1	16800
1T6500BT	6500	520	600	2	1.5	27000
1T7000BT	7000	520	600	2	1.5	27000
1T8000BT	8000	520	600	2	1.5	27000
1T9000BT	9000	520	600	2	1.5	27000

Detailed Specifications and Accessories

STANDARD SPECIFICATION

CONSTRUCTION: From first quality 18 SWG galvanised steel sheets forming a modular bolted panelwork system, 16 SWG, or heavier used in support panels. All panels have 40mm/15mm double folded return edges for stiffness. All bolts are bright zinc plated. Standard panels sizes from 500mm x 500mm to 1000mm x 2000mm in increments of 500mm. All hole centres identical for maximum interchangeability.

MOTORS: 3 phase - 415 volts - 50Hz as standard, Squirrel cage type. Available to IP54, or IP55, or fully flameproof layouts. Usually of Brook, or Asea manufacture.

CONTROL GEAR: One direct-on-line no volt release type push button starter, with thermal overload housed in an IP55 enclosure is supplied for each motor. Comprehensive control panels available at extra cost.

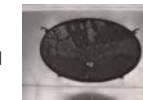


EXTRACTION RATES: Refer to detail sheets for extract fan sizes and performance. Typically these are designed to provide a minimum average face velocity of 0.7 metre/second.

LIGHTING: (When supplied) Special 18 SWG panels for roof, or sides with a strengthening frame spot welded into place carry a rough cast wired glass insert 8mm thick. Glass is either retained by a rubber seal, or sits on a ribbonseal strip. Illumination is provided by standard 'Fitzgerald' twin fluorescent lights usually 5ft long, complete with white angled reflector. Side lights are mounted on heavy duty steel hinges.

EXTRACTION FILTERS: Either 'Andrea' paper corrugated filters, usually two tiers high, each tier is 900mm high and full width of booth. The filter is retained in sturdy galvanised steel frames offering simple replacement of paper filter. Or, fibre glass 'soil and strip' filters, similar dimensions to the former, with modified steel frames which include a coarse steel mesh with hooks onto which the fibreglass can be placed. All filter frames are 2000mm, or 1000mm high and 1000mm, or 1500mm wide with identical fixing hole centres to panels.

GUARDS: A welded mesh finger guard protects the fan inlet and is retained by the fan fixing bolts.



DISPOSABLE PAPER FILTER INFORMATION AND DATA

The filter consists of two sheets of card with corrugations of unequal width. The cards are attached at their corrugations. Each sheet has rows of perforations staggered relative to the other both vertically and horizontally. This results in a tortuous passage for the air stream, causing it to strike at least four surfaces before leaving the filter. In doing so the sticky deposits strike the surface and adhere, only the air being finally discharged. Cartons, of folded paper filter, 910mm wide, (as supplied with booths) are available from our stock. Each carton contains 9 metres of filter when stretched to the correct length of 26 pleats per metre. The filter is very easily installed, an operation taking around two minutes.