

## Case Study

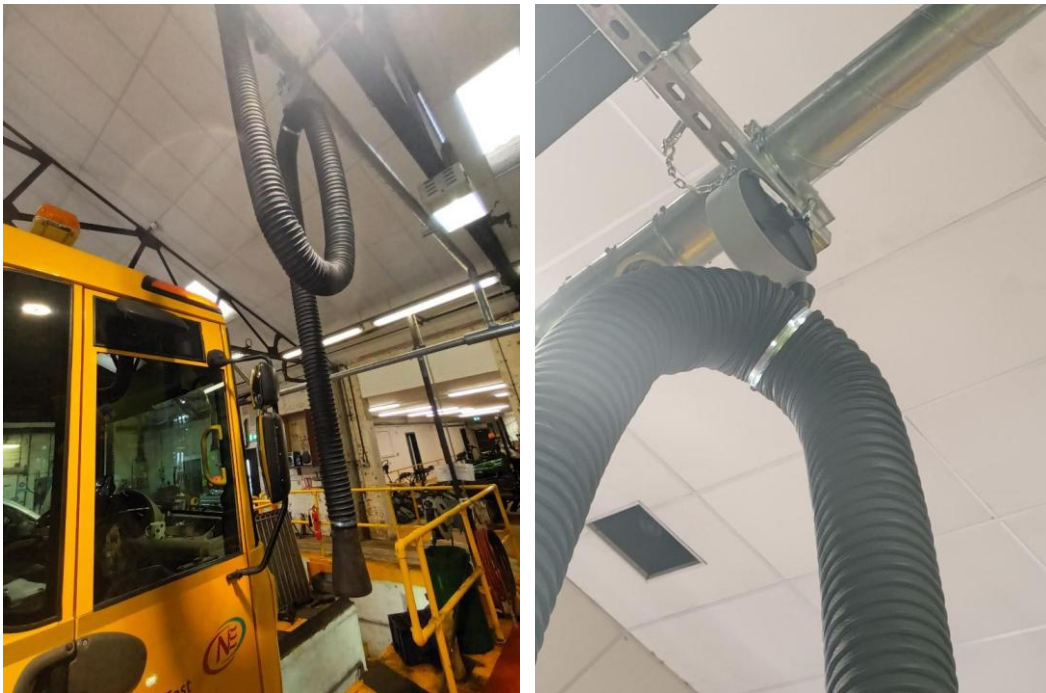
---

Our Company was approached to design and install an exhaust extraction system for a local Council Depot.

Space around the vehicle pits was at a premium and the client required an extraction system that protected workers from exhaust fumes but also one that didn't get in the way of operations or that was a trip hazard.

Each balance block fitted ensured that the hose was kept to a minimum length and was stowed in the roof space when not in use. This helped to keep the vehicle pit area free of a trip hazard.

Balance blocks make it easy to pull the hose down and lock into the desired position, when not in use the hose is then pulled to release the lock and return the hose to the roof space.



Even though engine standards become ever more stringent, extraction systems are still required to remove harmful exhaust fumes and protect persons in an enclosed space.