

# FumeCube

What to specify...

1. Single or Dual Arm System

2. Voltage

3. Pre-filter


4. Main filter

6. Interfacing Kit

	Single Arm System		Dual Arm System	
<b>1</b>				
<b>2</b>				
<b>Voltage</b>	<b>230V ± 10%</b>	<b>120V ± 10%</b>	<b>230V ± 10%</b>	<b>120V ± 10%</b>
<b>Part number</b>	<b>072066</b>	<b>072067</b>	<b>072065</b>	<b>072068</b>
<b>Wattage</b>	0.14 kW	0.107 kW	0.14 kW	0.107 kW
<b>Frequency</b>	50Hz / 60 Hz	50Hz / 60 Hz	50Hz / 60 Hz	50Hz / 60 Hz
<b>Cabinet height</b>	366 mm	366 mm	366 mm	366 mm
<b>Cabinet width (not inc hose)</b>	308 mm	308 mm	308 mm	308 mm
<b>Cabinet depth (not inc hose)</b>	294 mm	294 mm	294 mm	294 mm
<b>Cabinet weight (inc filters)</b>	17 Kg	17 Kg	17 Kg	17 K

**3**

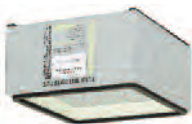
### Pre-filter Pad



Options:  
Pack of 4

**4**

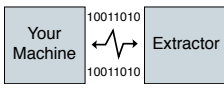
### Main filter



Options:  
HEPA/Chemical  
Chemical  
Cleanroom

**6**

### Machine Interfacing (Optional)



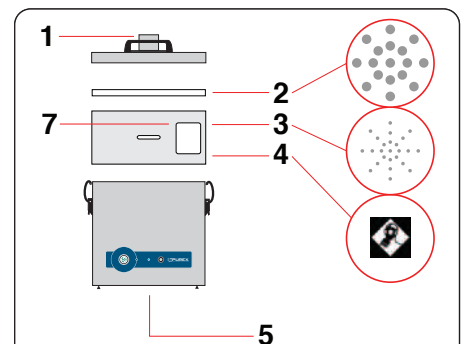
- **Start/Stop Control:** Extraction unit starts/stops when a connected piece of equipment is switched ON/OFF.
- **Filter Blocked Warning:** A signal is sent to a connected piece of equipment to trigger an alert or to shut it down.
- **Remote ON/OFF Switch:** 5M cable & switch



**Single arm system supplied with:**  
 1 x Filter + pre-filter pad  
 1 x 51mm x 2m flexible hose [black]  
 2 x Connecting cuffs [black]  
 1 x Clamped bracket  
 1 x 38mm stainless steel flexible arm and valve  
 1 x 38mm pen nib nozzle & 1 x conical cowl.



**Dual arm system supplied with:**  
 1 x Filter + pre-filter pad  
 2 x 51mm x 2m flexible hose [black]  
 4 x Connecting cuffs [black]  
 2 x Clamped bracket  
 2 x 38mm stainless steel flexible arm and valve  
 2 x 38mm pen nib nozzle and 2 x conical cowl.



**Legend:**

- 1) Air inlet.
- 2) Pre-filter.
- 3) Main Filter (HEPA location).
- 4) Main Filter (Carbon location).
- 5) Clean air returned to workplace.
- 7) Filter identification label.

In cleanroom filters, positions 3&4 are reversed.

## Controls

### Visual and Audible Filter Blocked Warning

Alerts the operator when a filter starts to block so that a replacement filter can be acquired and downtime can be avoided.

### LED Filter Status

Green = Filter OK  
 Yellow = Filter nearly full  
 Red = Filter full, replacement required

Interface with other equipment e.g. a laser optional.

## System Features...

- Automatic electronic flow control - maintains a constant extraction rate even as the filter blocks
- Adjustable airflow
- VariColour filter blocked warning system
- Low capital and running costs
- Quick change pre-filters deliver longer filter life
- Submicronic (HEPA) filtration removes 99.997% of particles down to 0.3 microns
- Activated carbon filtration removes harmful gas
- Simple to install and quiet in operation
- Easy to relocate
- Precision made from stainless steel

## Includes:

- 1 x Main filter
- 4 x Pre-filter pad
- 1 or 2 Arm Kit
- 1 Power Cable