

FumeBuster

What to specify...


1. Voltage


2. Pre-filter

3. Main filter

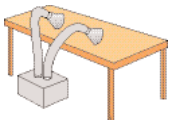

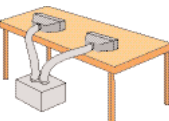

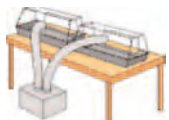
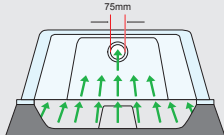

4. Capture Kit (For one or two stations)

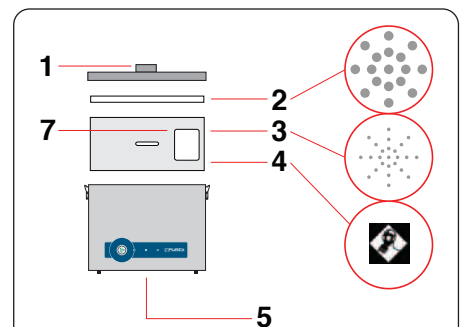
1	Machine Only	
Voltage	230V ± 10%	115V ± 10%
Part number	070362	070363
Wattage	0.3 kW	0.3 kW
Frequency	50Hz	60 Hz
Cabinet height (inc castors)	350 mm	350 mm
Cabinet width (not inc hose)	425 mm	425 mm
Cabinet depth (not inc hose)	415 mm	415 mm
Cabinet weight (inc filters)	25 Kg	25 Kg

2	Pre-filter Pad
	<i>Options:</i> Pack of 4

3	Main filter
	<i>Options:</i> HEPA/Chemical Chemical Cleanroom Filter



4	Capture Kit (Optional)
	1 x 1.2m x 75mm Ø flexible arm (includes fittings) + 1 x Conical cowl 
	1 x 1.5m x 75mm Ø flexible hose (includes fittings) + 1 x Anti-static plenum cowl (black) 
	1 x 1.5m x 75mm Ø flexible hose (includes 2 x hose clips) + 1 x Cleancab extraction cabinet  



Legend:

- 1) Air inlet.
- 2) Prefilter.
- 3) Main Filter (HEPA location).
- 4) Main Filter (Carbon location).
- 5) Clean air returned to workplace.
- 7) Filter identification label.

In cleanroom filters, positions 3&4 are reversed.
All machines are constructed of corrosion resistant stainless steel.

Controls

Visual and Audible Filter Blocked Warning

Alerts the operator when a filter is blocked so that a replacement filter can be acquired.

LED Filter Status

Green = Filter OK

Red = Filter full, replacement required

System Features...

- Audible and visual filter blocked alert
- Low capital and running costs
- Quick change pre-filters deliver longer filter life
- Submicronic (HEPA) filtration removes 99.997% of particles down to 0.3 microns
- Activated carbon filtration removes harmful gas
- Simple to install and quiet in operation
- Easy to relocate
- Precision made from stainless steel

Includes:

- 1 x Main filter
- 4 x Pre-filter pad
- 1 x Port Blank
- 1 x Power Cable