



TOTAL EXTRACTION SOLUTIONS LTD

Kilnhurst Business Park, Glasshouse Road, Kilnhurst, S64 5TH
T: 01709 577444 E: sales@totalextraction.co.uk

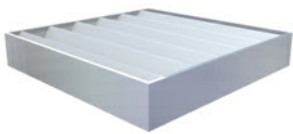


Controls

On/off switch or optional speed control wired to standard I3a plug for rapid installation.



Filter monitoring
By differential pressure gauge



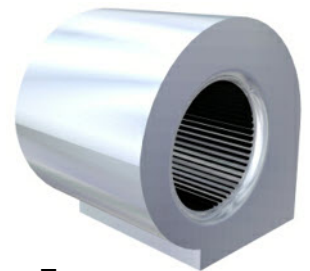
Filters

Selected to suit the application from the full AirBench range.



Body

2mm steel plate, fully welded and powder coated.



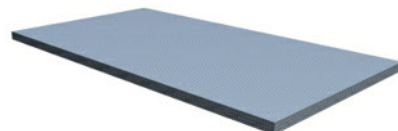
Fan

High powered centrifugal fan
* 2 fans in larger units.



Filter removal

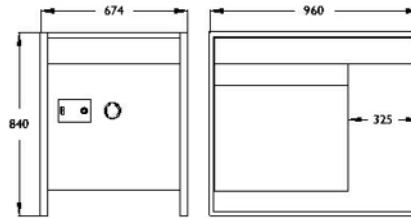
Quickly and simply by removing the top surface.
Filters are spring-clamped against soft rubber seals.



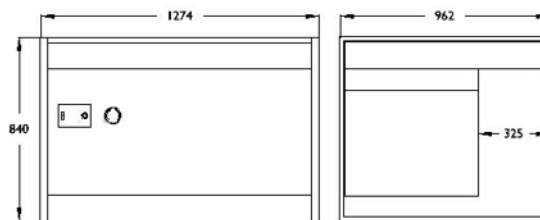
Surface

Heavy duty 3mm perforated steel plate with 4mm dia perforations, powder coated.
* In multiple sections on 975 deep units.

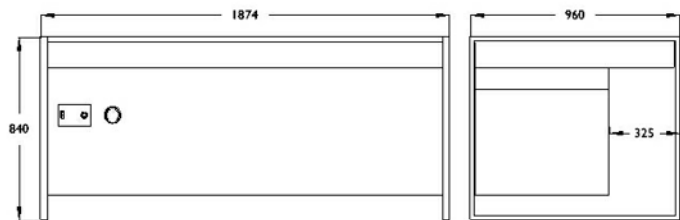
Fan Type Forward Curved Centrifugal
Fan Power 170w
Airflow 1000 m³/h - 1.5m/s at surface
Dimensions 674 x 960 x 840 mm
Actual Ventilated Area 610 x 650 mm



Fan Type Forward Curved Centrifugal
Fan Power 550w
Airflow 2000 m³/h - 1.5m/s at surface
Dimensions 1274 x 960 x 840 mm
Actual Ventilated Area 1210 x 650 mm



Fan Type Forward Curved Centrifugal
Fan Power 570w
Airflow 3000 m³/h - 1.5m/s at surface
Dimensions 1874 x 960 x 840 mm
Actual Ventilated Area 1810 x 650 mm



Available Filter Configurations

A: Dust
H: Fine Dust
B: Very Fine Dust
L: HEPA Filtered
E: Fume in Low Volumes
S: Solder Fume
C: Dust with some sparks

General

Power Supply 240v, Single Phase - 110v available
Surface Loading 150kg - Higher loadings on request
Finish Textured grey powder coat - other finishes on request
Noise Level 63dBa average across range
Specifications vary for some filter configurations - "A" configuration shown.

Dimensions nominal; specifications subject to change.